



THURSDAY

MORNING REPORT

Have a Good Trading Day



We simply attempt to be fearful when others are greedy and to be greedy only when others are fearful.

- Warren Buffet



MARKET PULSE

INDIAN INDICES

NAME	CMP	NET CH.	%
BSE SENSEX	36975.23	358.42	0.98%
Nifty 50	11062.45	128.1	1.17%

INDIAN ADR'S

SYMBOL	CLOSE	GAIN/ LOSS %
DRREDDY	39.37	-1.2
HDFCBANK	100.26	0.42
ICICIBK	10.00	1.73
INFY	10.90	0.55
TATA MOTOR	12.59	2.19
WIPRO	5.65	0.36

FII AND MF ACTIVITY

SYMBOL	Rs.(in cr.)
FIIs Eq (Provisional)	695
DII's Eq (Provisional)	525
FIIs Index Future	2818
FIIs Index Options	263
FIIs Stock Future	866
FIIs Stock Options	82

CURRENCY

CURERNCY	RBI RATE
RUPEE - \$	71.5731
EURO	81.5461
YEN 100	65.2100
GBP	92.6886

TOP STORY

- Ajanta Pharma - cash offer to buyback 7.69 lakh shares at Rs1300 per share
- Andhra Bank revised base rate to 9.50%
- GAIL offloads pipeline laying contract of Bokaro-Durgapur section from M/s IL&FS
- Majesco announces launch of its rights offering
- **RBI Central Board meeting** deferred to February 18

MARKET PULSE

GLOBAL INDICES

NAME	CMP	NET CH.	%
Dow	25390.3	-21.22	-0.08%
Nasdaq	7375.28	-26.8	-0.36%
Nikkei	20724.64	-149.42	-0.72%
HANG SENG INDEX	27990.211	59.471	0.21%
SGX NIFTY	11074.50	-30.50	-0.27%

WORLD COMMODITIES

FUTURE	CMP	%
CRUDE	53.82	-0.35%
NATURAL GAS	2.685	0.86%
GOLD	1308.4	-0.46%
SILVER	15.655	-0.29%
COPPER	2.8265	-0.35%

WORLD EVENTS

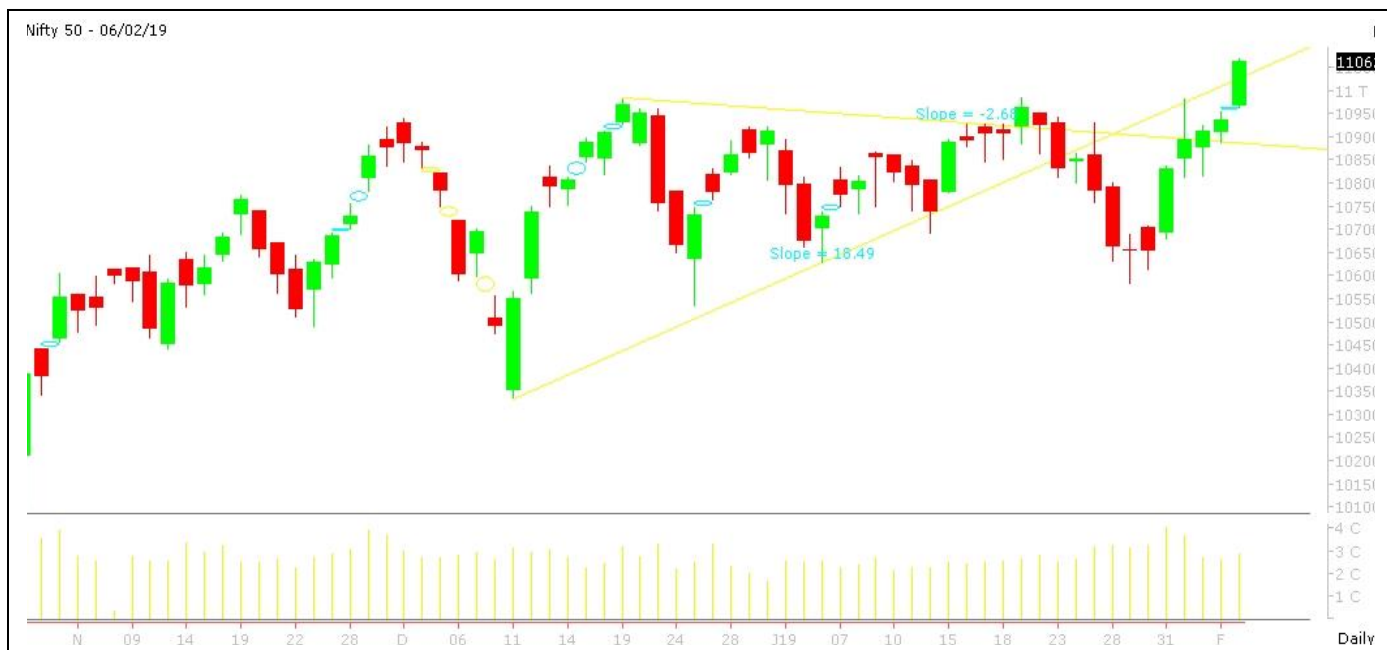
- USD** : FOMC Member Quarles Speaks
: Fed Chair Powell Speaks
: FOMC Member Clarida Speaks
- GBP** : Monetary Policy Summary
: MPC Official Bank Rate Votes

RESULTS TODAY

Tata Motors, Adani Enterprises, Aurobindo Pharma, Britannia Industries, Cadila Healthcare, Coffee Day Enterprises, Eros International Media, Grasim Industries, Hindustan Construction Company, Ircon International, MRF, Khadim India



NIFTY CHART



MARKET COMMENTARY

The Sensex, rose 34.07 points or 0.09% to settle at 36,616.81. The index hit high of 36,727.83 and low of 36,495.83 in intraday trade.

The Nifty 50 index rose 22.10 points or 0.20% to settle at 10,934.35. The index hit high of 10,956.70 and low of 10,886.70 in intraday trade.

Broader market witnessed selling. Among secondary barometers, the BSE Mid-Cap index fell 0.54%. The BSE Small-Cap index fell 0.91%.

The market breadth, indicating the overall health of the market, was weak. On BSE, 859 shares rose and 1 703 shares fell. A total of 147 shares were unchanged.

Nifty likely to trade in the range of 10880-11210

MARKET LEVELS

NAME	PIVOT	SUPPORT LEVELS			RESISTANCE LEVELS		
NIFTY	11033	10993	10923	10883	11103	11143	11212
USDINR	71.697	71.479	71.333	71.115	71.843	72.061	72.207



BULK DEALS (BSE)

SCRIP	CLIENT NAME	BUY/SELL	QUANTITY	PRICE
DEEP	NNM SECURITIES PVT LTD	S	60,000	47.44
SGRL	MIKER FINANCIAL CONSULTANTS PRIVATE LIMITED	B	45,000	51.10
WHITEORG	SAMIR SHANTILAL MEHTA	S	100,000	33.25
ZEAL	NNM SECURITIES PVT LTD	S	65,250	110.10
SGRL	MIKER FINANCIAL CONSULTANTS PRIVATE LIMITED	B	45,000	51.10

BULK DEALS (NSE)

SCRIP	CLIENT NAME	BUY/SELL	QUANTITY	PRICE
VIVIMEDLAB	IFCI LTD.	SELL	535151	20.55
XELPMOC	TRUST INVESTMENT ADVISORS PRIVATE LIMITED	BUY	171146	65.9
XELPMOC	GP EMERGING MARKETS STRATEGIES LP	SELL	87525	65.9
XELPMOC	UNIVERSITY OF NOTRE DAME DU LAC	SELL	83000	65.9

SCRIP'S IN F&O BAN

(To resume for normal trading below 80% of market wide limit required)

- **In ban:** IDBI, DHFL, RELCAPITAL, JETAIRWAYS, RELINFRA
- **New in ban:** RELINFRA
- **Out of ban:** none

Initial Public Offering (IPO)

Company Name	Security type	Issue Start Date	Issue End Date	Status



NIFTY 50 STOCKS: SUPPORT & RESISTANCE

Symbol	Close	Support 1	Support 2	Pivot Point	Resistance 1	Resistance 2
ADANI PORTS	330	319	307	330	342	353
ASIAN PAINT	1469	1456	1442	1466	1480	1490
AXIS BANK	726	716	706	725	735	744
BAJAJ-AUTO	2770	2728	2686	2756	2799	2827
BAJAJ FINSV	6209	6095	5981	6163	6277	6345
BAJ FINANCE	2711	2642	2573	2681	2750	2789
BHARTIARTL	309	303	297	307	313	316
BPCL	339	337	334	339	342	344
CIPLA	535	510	486	529	553	571
COALINDIA	220	217	215	219	222	223
DRREDDY	2790	2762	2734	2789	2817	2844
EICHERMOT	21104	20689	20274	20945	21360	21615
GAIL	340	333	326	337	344	348
GRASIM	734	712	691	726	747	761
HCLTECH	1055	1045	1035	1055	1065	1075
HDFC	1988	1977	1967	1986	1997	2006
HDFCBANK	2123	2115	2108	2121	2129	2134
HEROMOTOCO	2880	2856	2832	2874	2898	2916
HINDALCO	211	205	199	209	215	218
HINDPETRO	234	229	223	232	237	240
HINDUNILVR	1830	1821	1812	1829	1838	1845
IBULHSGFIN	654	639	625	651	665	676
ICICIBANK	359	354	349	358	363	367
INDUSINDBK	1526	1507	1489	1526	1544	1562
INFRATEL	296	291	285	294	300	304
INFY	763	756	749	762	769	774
IOC	138	135	132	137	140	141
ITC	278	275	273	277	279	281
JSWSTEEL	279	273	267	278	284	289
KOTAKBANK	1280	1274	1269	1282	1287	1294
LT	1314	1298	1281	1310	1327	1339
M&M	695	685	676	692	702	708
MARUTI	7183	7094	7004	7157	7247	7310
NTPC	137	135	134	137	138	139
ONGC	147	144	140	146	149	151
POWERGRID	187	185	183	187	189	191
RELIANCE	1310	1297	1284	1307	1321	1331
SBIN	289	285	281	287	291	294
SUNPHARMA	417	407	397	413	423	429
TATAMOTORS	179	174	169	177	181	184
TATASTEEL	485	470	456	479	493	501
TCS	2075	2048	2022	2068	2094	2113
TECHM	811	785	759	800	826	840
TITAN	1059	1049	1039	1061	1071	1082
ULTRACEMCO	3510	3456	3402	3495	3550	3589
UPL	805	798	790	804	811	818
VEDL	164	159	155	162	167	169
WIPRO	372	369	366	372	375	378
YESBANK	176	173	170	176	179	182
ZEEL	388	371	353	384	402	415



NSE CIRCULARS

NSE Circular. : Applicability of Short Term Additional Surveillance Measure (ST-ASM) (zip)W.e.f. FEB 07, 2019

NSE Circular: Applicability of Additional Surveillance Measure (ASM) (zip) W.e.f. FEB 07, 2019

NSE Circular: Listing of further issues of Gruh Finance Limited, ICICI Bank Limited, Mahindra Logistics Limited, RBL Bank Limited and Tejas Networks Limited (pdf))w.e.f. FEB 07, 2019

NSE Circular: Listing of Equity Shares of Chalet Hotels Limited (IPO) (zip))W.e.f. FEB 07, 2019

NSE Circular: Exclusion of Futures & options Contracts in Reliance Communications Limited (RCOM) (pdf) w.e.f. FEB 07, 2019

NSE Circular: SEBI Order in the matter of Gremach Infrastructure Equipments and Projects Limited (presently known as Sancia Global Infracore Ltd.) (w.e.f. FEB 07, 2019)

[illegible]

NEWS & RUMOURS:

- **Gold (Spot Dollar) major support = \$1291/\$1260 & Resistance = \$1336/\$1366.**
- **Crude oil range (WTI)->\$50 to \$60.**
- **Wall Street dips after disappointing forecasts from video game companies:** - U.S. stocks dipped on Wednesday as disappointing forecasts from videogame makers pulled the communications sector lower, but a boost from technology companies kept the indexes near two-month highs.
- **Forex - Euro Drops on Weak German Orders; Aussie Slumps on RBA Comment:** - The U.S. dollar rose to its highest in over a week against the euro in early trading in Europe Wednesday, after more soft data from Germany underlined the loss of momentum in the euro zone's traditional growth engine. Incoming orders to German factories fell by 1.6% in December, their second straight monthly drop and the biggest monthly fall since June. Economists had expected an increase of 0.3% on the month.
- **Gold Prices Slide Ahead of Comments from Fed Chair Powell:** - Gold prices edged lower on Wednesday, as market players looked ahead to comments from Federal Reserve Chair Jerome Powell for further hints about the outlook for monetary policy in the months ahead.
- **U.S. Crude Oil Inventories Rise by 1.26M Barrels Last Week: EIA:** - U.S. crude oil inventories increased last week, the Energy Information Administration said in its weekly report on Wednesday. The EIA data showed that crude oil inventories rose by 1.26 million barrels in the week to Feb. 1. That was compared to forecasts for a stockpile build of 2.18 million barrels, after a gain of 0.92 million barrels in the previous week. The EIA report also showed that gasoline inventories rose by

TRENDS & OUTLOOK – DATE: 07-FEB- 2019

PRECIOUS METALS:

COMMDITY (MCX)	S2	S1	PIVOT POINT	R1	R2
GOLD (APR)	32790	33064	33333	33659	33877
SILVER (Mar)	38050	39123	40270	41559	42755

BASE METALS

COMMDITY (MCX)	S2	S1	PIVOT POINT	R1	R2
COPPER (Feb)	437	443	449	457	463
ZINC (Feb)	187.20	190.35	194.90	198.70	202.75
LEAD (Feb)	142.15	146.30	150.25	153.70	157.65
NICKEL (Feb)	875	903	925	957	975

ENERGY

COMMDITY (MCX)	S2	S1	PIVOT POINT	R1	R2
CRUDE OIL (FEB)	3600	3711	3850	3990	4077
NATURAL GAS (FEB)	180	186	192	201	207

DATA TALKS : TODAY'S ECONOMIC DATA :

FOMC Member Quarles Speaks, Fed Chair Powell Speaks, BOE Inflation Report, Monetary Policy Summary of BOE, Unemployment Claims, FOMC Member Clarida Speaks, Natural Gas Storage, 30-y Bond Auction.

When life goes easy, the future welcomes you with excitement

Presenting

ALGORITHMS

SBS - Jobbing

SBS Stands for Simple Buying and Selling

The act or practice of buying stocks only to resell them at a profit very quickly. Stock jobbing is a short-term investment strategy that operates on the assumption or existence of liquid markets.

This Trading algorithm is designed basically for jobbing:

Pre Defined Stop Loss

Pre Defined Risk

Buy-Sell Both

Carry Forward



Arbitrage

Arbitrage Stands for Simple Buying and Selling stocks but in another exchange. A Simple Arbitrage Example

As a simple example of arbitrage, consider the following. The stock of Company X is trading at 100 on the NSE while, at the same moment, it is trading for 100.50 on the BSE. A trader can buy the stock on the NSE and immediately sell the same shares on the BSE, earning a profit of .50 per share.

Market Depth

An informative product, which is designed to see more than the 5 Best ask/ bid available in market.

Generally all trading software's shows Only 5 Bid/ Ask, But this information window allows you to see the full market depth available in market, Apart from it we can sort it with price and quantity. Useful for placing stop losses and tracking the Bulk deals.

SIP CALCULATOR

Calculates the
Future Value
of an
Investment



SIP Amount (Rs.)
10,000



Investment Frequency
Monthly



Expected Return (p.a.)
14.00%

Year	Principal (Rs.)	Future Value (Rs.)	Appreciation
1	120,000	128,918	8,918
2	240,000	275,884	35,884
3	360,000	443,426	83,426
4	480,000	634,423	154,423
5	600,000	852,161	252,161
10	1,200,000	2,492,923	1,292,923
15	1,800,000	5,652,071	3,852,071
20	2,400,000	11,734,741	9,334,741
25	3,000,000	23,446,403	20,446,403
30	3,600,000	45,996,206	42,396,206
35	4,200,000	89,413,927	85,213,927
40	4,800,000	173,011,040	168,211,040
45	5,400,000	333,970,140	328,570,140
50	6,000,000	643,883,137	637,883,137



Indira Securities Pvt. Ltd
Member: NSE, BSE, CDSL

Indira Commodities Pvt. Ltd.
Member: MCX, NCDEX

**Registered Office**

Indira House, 3rd Floor, 5 Topiwala Lane,
Opp. Lemington Road Police Station, Grant Road (East), Mumbai - 400007.

Corporate Office

204 Amardarshan Building 3rd floor, Saket Nagar, Indore - 452018 (M.P.)

Customer Care

Tel: +91-731-4797170/ 71/ 72/ 73/ 74 M. +91 93031 72345

Email: customercare@indiratrade.com www.indiratrade.com

**INSTITUTIONAL DEALING UNIT**

Africa House, 5, Topiwalla Lane, Lamington Road, Mumbai, 400007

Tel: +91 2230080678; Email: ie@indiratrade.com

Disclaimer

This report is for private circulation within the Indira Group. This report is strictly confidential and for information of the selected recipient only and may not be altered in any way, transmitted to, copied or distributed, in part or in whole, to any other person or to the media or reproduced in any form. This report should not be construed as an offer or solicitation to buy or sell any securities or any interest in securities. It does not constitute a personal recommendation or take into account the particular investment objectives, financial situations, or any such factor. The information, opinions estimates and forecasts contained here have been obtained from, or are based upon, sources we believe to be reliable, but no representation of warranty, express or implied, is made by us to their accuracy or completeness. Opinions expressed are our current opinions as of the date appearing on this material only and are subject to change without notice.